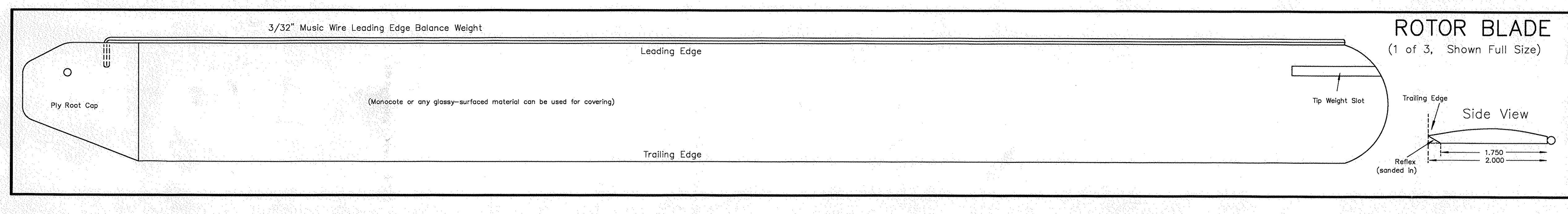
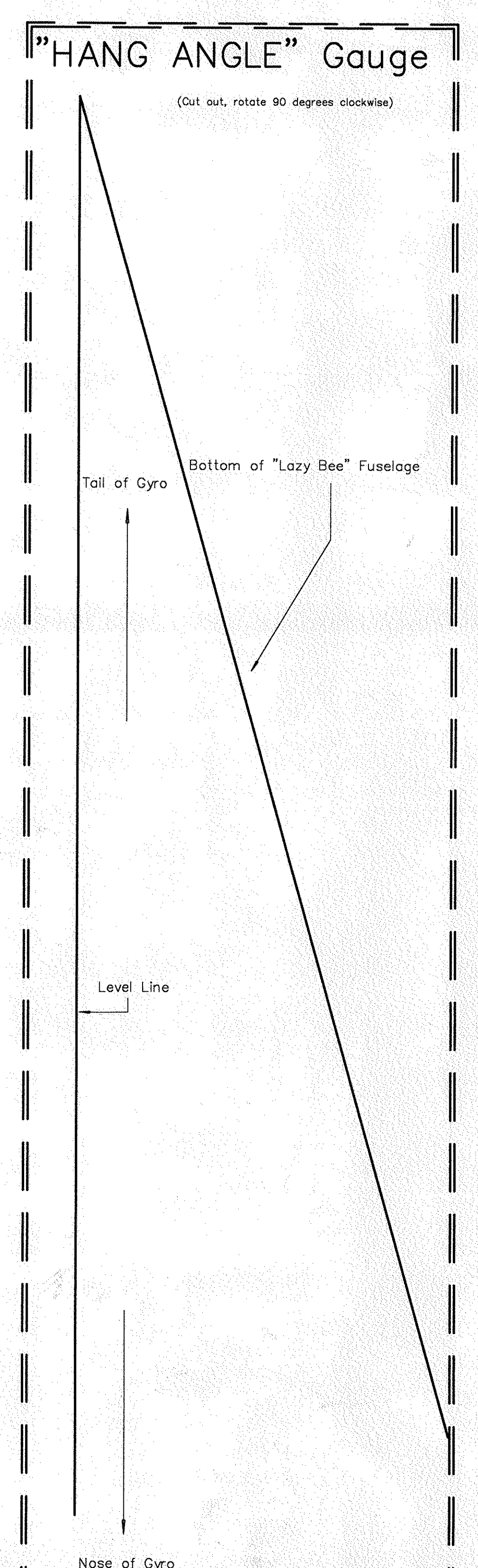
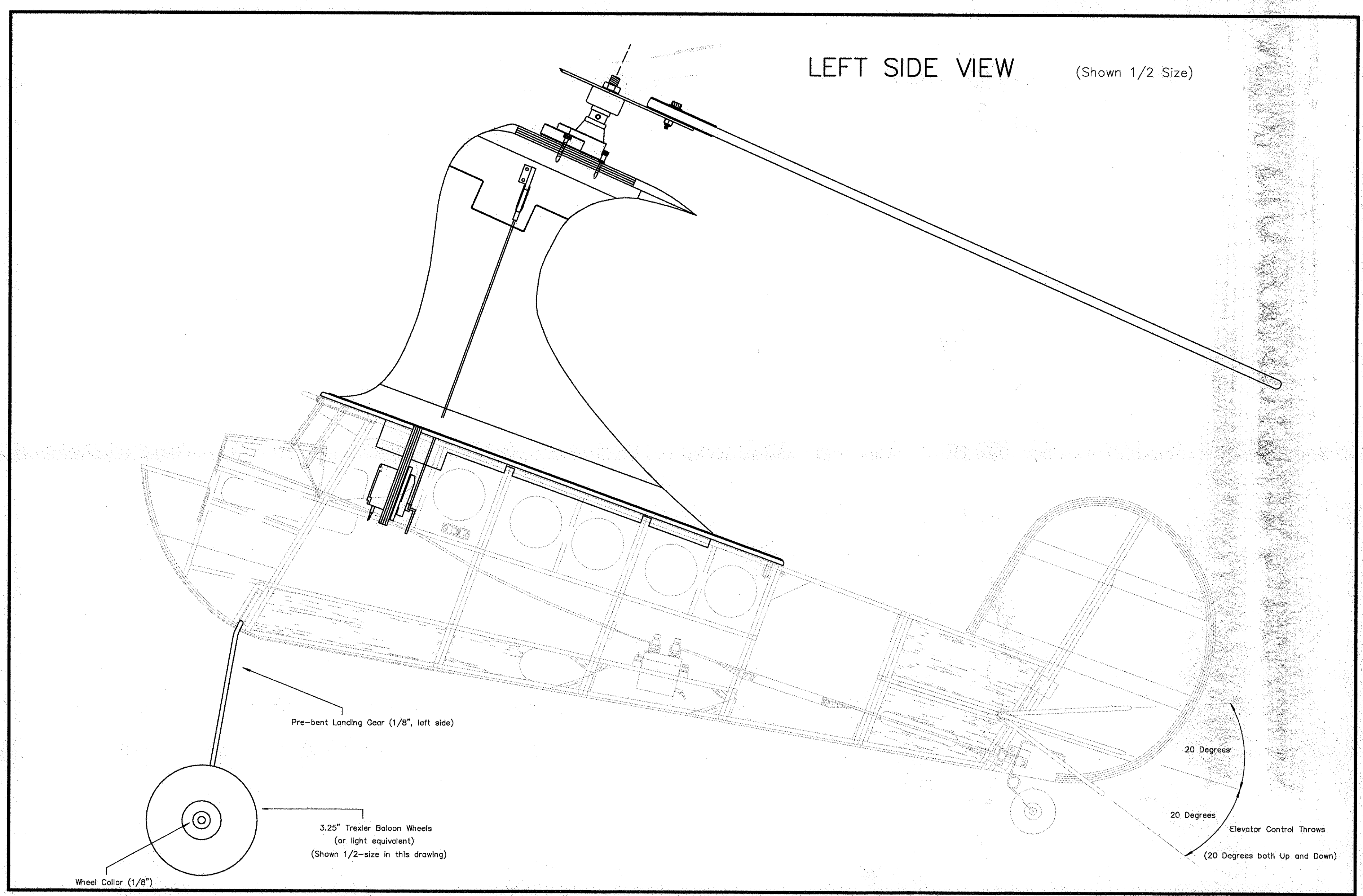
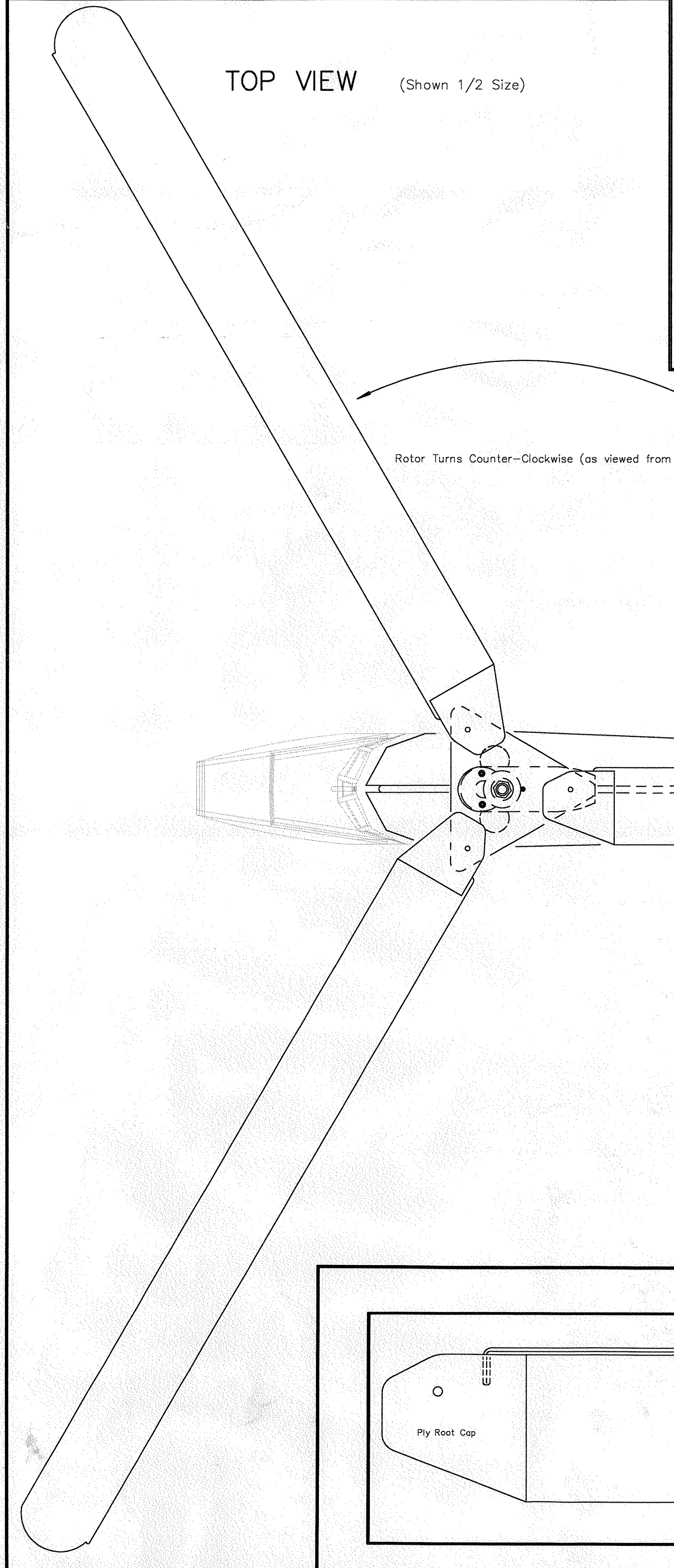
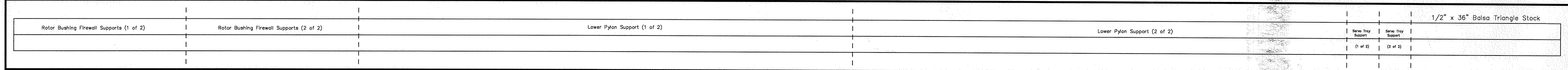
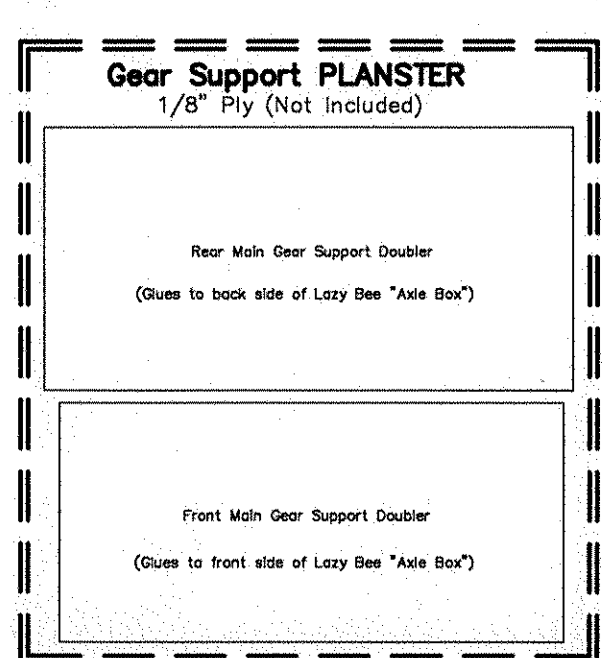
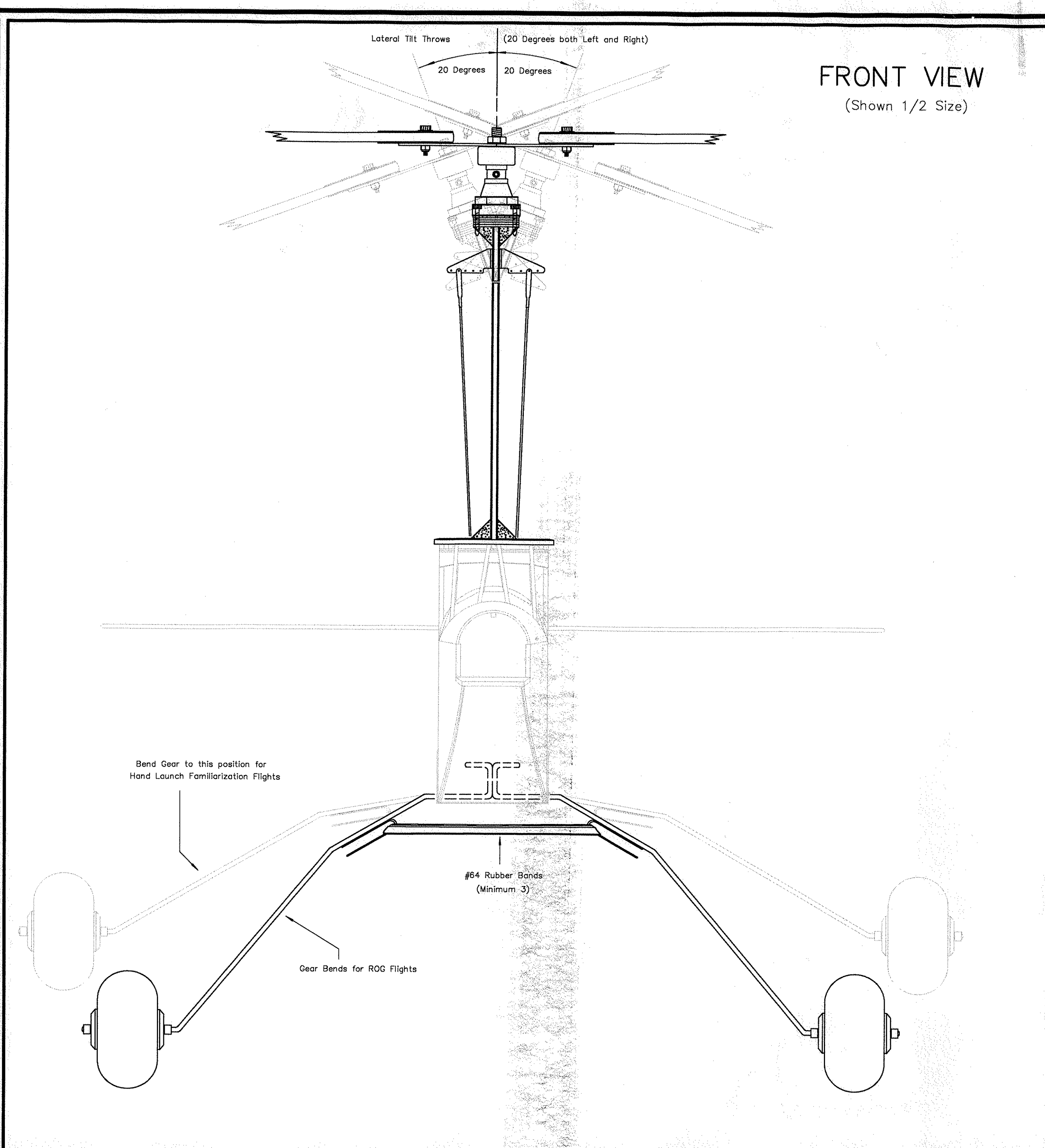
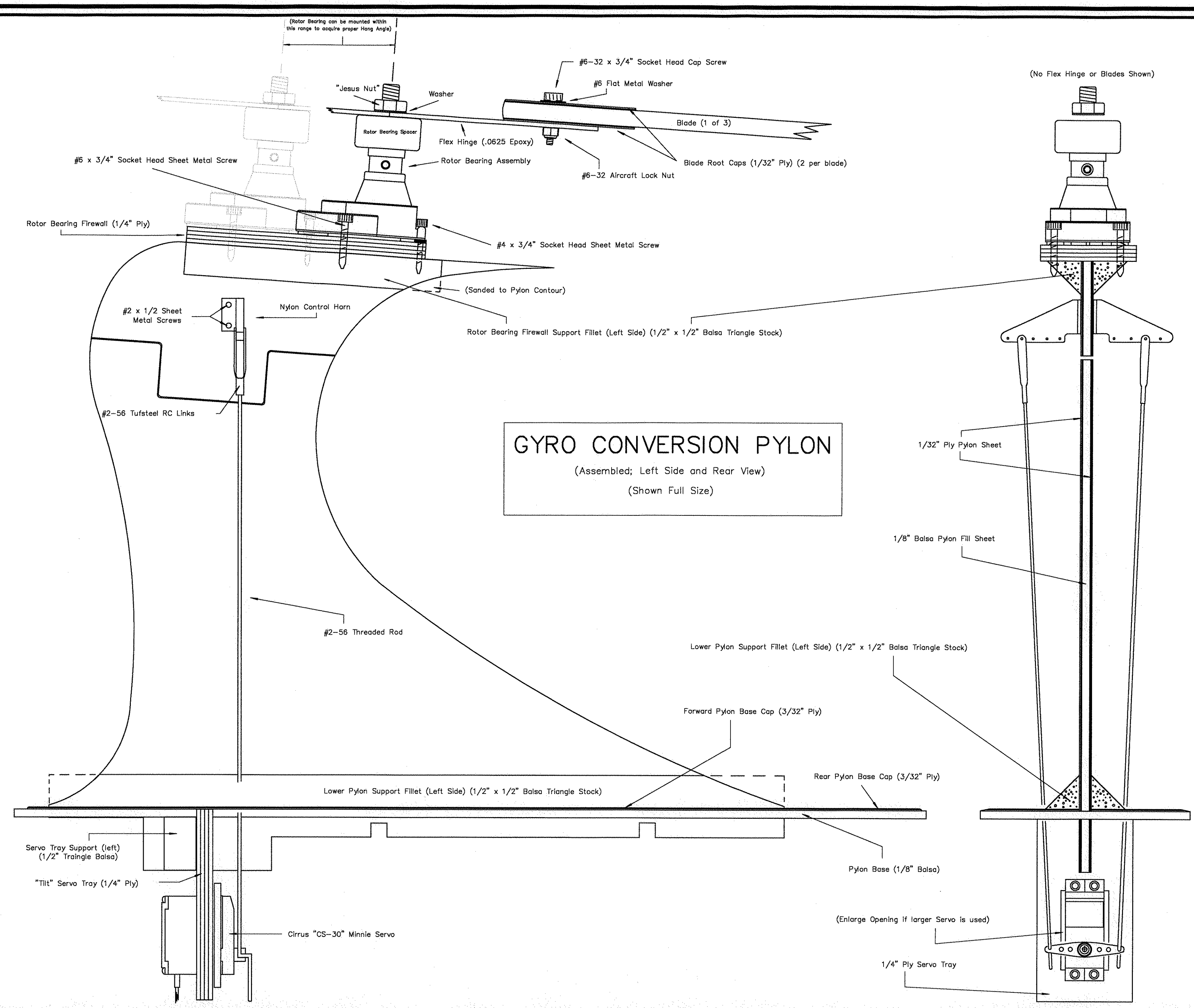
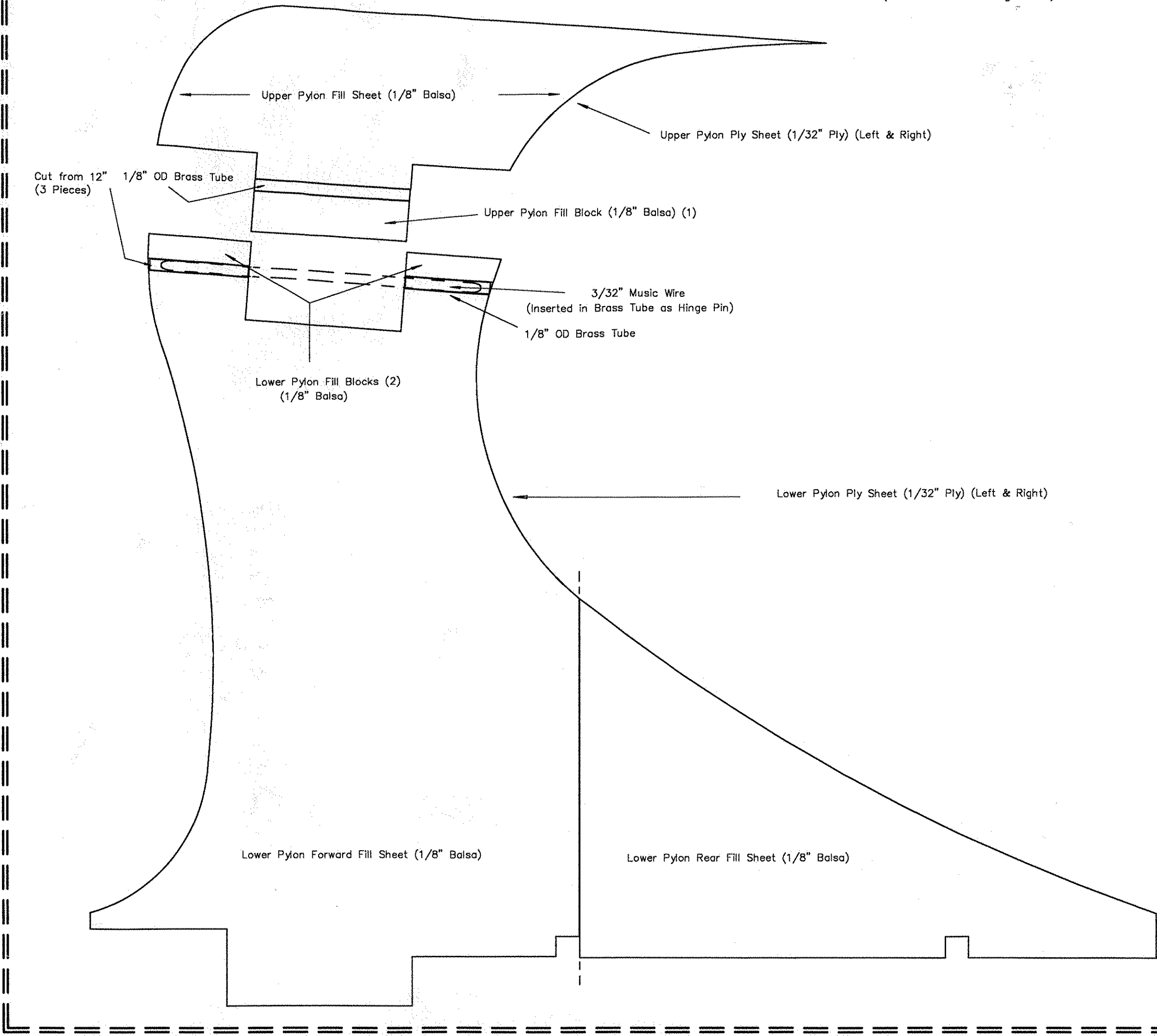


PYLON PLANSTER

Rotor Pylon Assembly
(Full-size Building Plan)



<p>GYRO BEE (Autogyro Conversion for Clancy's LAZY BEE) AUTOGYRO COMPANY of ARIZONA 3307 West Renee Drive, Phoenix, AZ 85027 Internet E-Mail: giroman@prodigy.net Web Site: http://www.autogyro-rc.com Tech Support: (623) 582-9428 "GYRO BEE" Conversion Designed by: Steve Tillson Copyright 1998, Autogyro Co. of AZ</p>	<p>GYRO BEE Wingless, Lateral Direct-Control Autogyro for Radio Control .15-.25 2-Cycle .26-.30 4-Cycle 4-Channel, Sport Radio Weight: 48 oz Length: 33" Rotor Diameter: 48" Disc Loading: 3.82 oz/sq ft Scale (Plansters) = Full Size Scale (Completed Views) = Half Size</p>
---	---